

1 COOTE COTTAGES



FRANCIS & DAPHNE NICKLEN

Map Reference E5

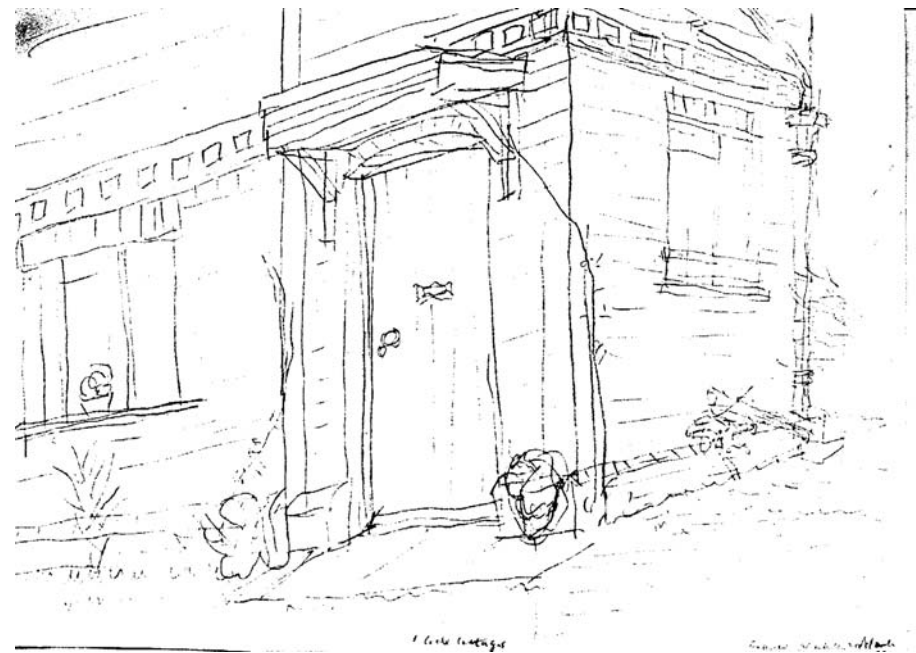
Francis John Nicklen, Flight Lieutenant RAF retired.
Daphne Vivian Stella Nicklen, Teacher, housewife.
Rosemary Daphne Nicklen, undergraduate Keble College Oxford, reading classics and English.

Boys, Salisbury, studying `A` level Biology, Food technology and geography.

We have owned cottage since 1995 and like Damerham, and it has family connections. Walking is our favourite activity.

House built about 1865 after the previous one was burnt down in the fire of 1863, which destroyed other houses at East End and High Street. In our time here we have tried to improve the condition of the house but not change its character. We have planted the garden to reflect the trees and flowers of the locality, and to incorporate the Allen River at the Eastern end more. Lady Evelyn Mary Coote, the wife of Sir Eyre Coote, owned the cottage from 1942 until she died in 1944, the last of the family in Damerham.

The village remains largely unspoilt visually



Richard Francis Nicklen, Lower Sixth Form, Bishop Wordsworth`s Grammar School for

from the days when it was part of the Coote Estate, but few of the people are indigenous. My grandfather Benjamin Staples from

Rockbourne used to visit here with a gramophone, and charge a penny to listen. He ran a horse-drawn taxi service.

Our son Richard was born when we lived at South End in 1982, and now has an allotment off the High Street.

There is a local story regarding Sir Eyre Coote of West Park. He was playing cards at the Rose and Thistle, Rockbourne, and with the game increasing in stake, he put the Estate up, and with play being against him, his butler overturned the table, which saved the Estate.

In the war, from 1942, the Americans requisitioned West Park. They were generous in holding parties for the local children and putting on film shows.

1 ELEANOR COTTAGES



JAMES & HAYLEY TODD

Map Reference D4

Previous Residents

James and Hayley Todd are both barristers. James' chambers are in London and Hayley's are in Southampton. We were married in 1995 and came to live in Damerham in August 1996. We chose Damerham partly because we already had friends in the area and also because we preferred to live away from the busy New Forest and the commuter belt further east. In August 1998 Theo was born at Salisbury District Hospital. He is a happy and

healthy baby and we are looking forward to watching him grow up in the village. We do a lot of walking in our spare time, often along the footpaths around the village and also in the hills around Shaftesbury and the Blackmoor Vale. We love Damerham because it combines a proper working heart with rural tranquillity, Having come from London, we were used to living without ever getting to know our neighbours. We have found life in Damerham much more friendly.

Our house is the first of a terrace of cottages. It dates from about 1885 and is a typical Victorian cottage with quite large rooms and high ceilings. An extension was built on in about 1980 which almost doubled its size. When we moved in there was no central heating and we soon discovered that it was virtually impossible to keep the place warm. In 1998 we had extensive works done including



the fitting of central heating and a new kitchen. It is now a comfortable, cosy home and we love living here. In recent times, 1, Eleanor Cottages does not seem to have been a house where people have stayed for very long. Since we moved in, we have met several people who have lived in it at one time or another. Everybody, though, says how pleasant it was living here.

2 ELEANOR COTTAGES



JOSEPHINE WHITE

Map Reference D4

My name is Josephine White - when my husband died in 1969, we were living in a large house in Durnford, near Salisbury. Two of our six children were still at home. Having spent my time as wife and mother, I embarked on a career teaching the cello in various schools in and around Salisbury. I came to live in Damerham in December, 1988, after I retired, wishing to be near my sister Lois Paterson of Chapel Cottage. The family, including nine grandchildren, enjoy coming to see me. My great passion is gardening. I work an allotment adjoining the property. I enjoy bird watching and carry binoculars on walks with my dog Gypsy, a brown and white crossbreed. I continue to enjoy making music with friends in string quartets, and belong to

Salisbury Orchestral Society, in which I play double bass.

I have no details of the exact age of my house. It was probably built early in the century. In 1976, No. 2 Eleanor Cottages was the subject of a closing order, in lieu of a demolition order, "New Forest District Council being satisfied that the house is unfit for human habitation." In 1977, Mr. and Mrs. Harrison bought the property, and over a period of years made an excellent job of converting the house into a pleasant dwelling. When I bought it, there was no work needing to be done, so I was able to concentrate on transforming the garden. I created flower beds, steps up the steep bank, and three small pools. In 1991, David and Edward Tiller, the local builders, completed a porch at the front door.

Damerham is a very special village. We are



fortunate to have a Church, chapels, a pub, a garage, small shop and Post Office, and not least the Infant School. With our new Hall and activities going on therein, there is hope that the next millennium will hold a bright future for the Village with its varied mix of friendly people. As a member of the Damerham and District Horticultural Society, I help at the annual shows in Spring and Summer.

Surrounding villages join in these and other activities, making this corner of rural Hampshire a very special place.



1 THE BUNGALOW



JAMES WHITING

Map Reference D5

The serious condition of my late wife's health hastened our move from Godshill to here, as this abode was more suited for home dialysis than the timber shack wherein we had spent so many happy years on the Sandy Balls Estate. We arrived here during March, 1982, and started dialysis within three days of arrival. We married very late, but apart from this, my wife was never strong enough to have any thoughts of having a family, as a bout of rheumatic fever during her youth had weakened her heart considerably. Be that as it may, my poor wife between 1982 and her death in 1995 endured a kidney transplant and heart operation - fitted pacemaker, and three bouts of pleurisy in 1991, 92 and 93. Us humans don't come braver or tougher than that. In between hospital and clinic visits, on coach trips we must have travelled thousands of miles together. Her wonderful disposition and temperament never changed throughout. She was a wife in a million. Now, in spite of the volume of work at home, I still manage to maintain two hobbies - chess and drawing. But during the summer months, most of all I enjoy the trip or two to those parts where we first met and lived.

According to a late friend who had much knowledge of this area, these bungalows, 1 and 2, were originally built for the local constabulary in 1948, and according to him, were built the wrong way round! Whether by accident or design he knew not, but they certainly are!

I can't add much to this except to say that village life is more neighbourly and certainly more peaceful, otherwise I find little difference.



2 THE BUNGALOW



KETURAH ASLETT

Map Reference D5

I was born at Rockbourne in July 1914, named Kiturah. I went to the village school. When I left school at 14 I took on my father's milk round, which I did for 14 years. During the War I joined the A.R.P. and 1st Aid. My father and brother were in the fire service.

I was married in 1943 to Bernard Read at Rockbourne Church, and went to live at Toyd Farm Cottages. In 1970 we moved to Toyd Corner Bungalow. In August, 1980, Bernard died. I moved to No. 2 The Terrace, Damerham in 1993. I joined the Evergreen Club, where I met Harold Aslett, and we were married at Martin Methodist Church on March 15th, 1988. Sadly Harold passed away in 1990.

The Council built the 2 bungalows on the Bank in the late 1940's. It has a garden in the front and back.